

# HEICO-TEC® EXPANSION BOLT

## Information on the quotation

**Enquiry number:** \_\_\_\_\_ **Date:** \_\_\_\_\_ **Customer number:** \_\_\_\_\_

Company: \_\_\_\_\_ Contact person: \_\_\_\_\_

Address: \_\_\_\_\_ Department: \_\_\_\_\_

\_\_\_\_\_ E-Mail: \_\_\_\_\_

Country: \_\_\_\_\_ Phone: \_\_\_\_\_

**Quotation requested by:** \_\_\_\_\_ **Delivery until:** \_\_\_\_\_

**Application description:** \_\_\_\_\_

---

---

---

---

---

---

---

---

---

---

**Type of movement:**

Rotating  Linear  Static

**Installation situation:**

Horizontal installation  Vertical installation  Overhead installation

**Expansion bolt type:**

Expansion bolt type 1 / threadless bores  Expansion bolt type 2 / blind bores  Expansion bolt type 3 / through bores

**Operability from:**

1 Side  2 Sides

**Additional requirements:**

Additional protection against automatic loosening  Increased requirement for corrosion protection

Please use a separate data sheet for each application or for different main dimensions. For other installation situations or deviating geometries, please enclose a corresponding sketch or drawing section with your enquiry form.

A separate dimension sheet applies to the bore tolerances. If the holes are outside the tolerance, it is recommended that they are drilled out together to a standardised dimension, which is then within the H8 tolerance over the entire length of the hole.

Please send the completed enquiry form with your sketches or technical drawings to [sales@heico-group.com](mailto:sales@heico-group.com). Our qualified HEICO sales team will contact you promptly and send you an attractive offer.

# HEICO-TEC® EXPANSION BOLT

## Technical data:

Details of the expansion bolt	
Hole-Ø [mm]	db
Pitch-Ø [mm]	TK
Numbers	z

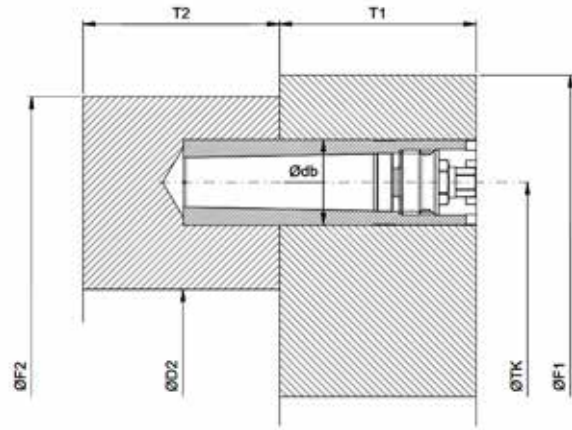
Rotating movement	
Flange power	
Rotation speed [min-1]	
Torque [Nm]	
Bending torque [Nm]	
Longitudinal tensile force [kN]	

Static and linear movement	
Shear force (across) [kN]	
Tractive force (lengthwise) [kN]	

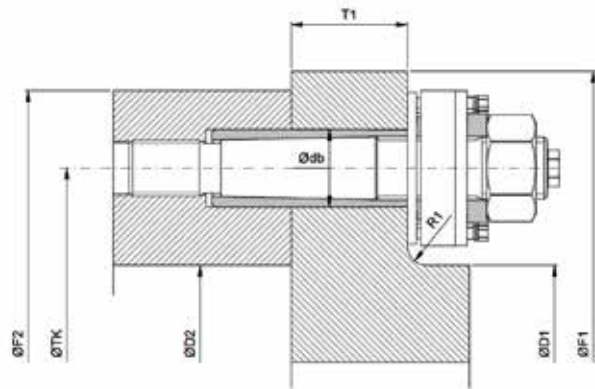
Details of the expansion bolt	
Width [mm]	T1
Outer-Ø [mm]	F1
Inner-Ø [mm]	D1
Radius [mm]	R1
Material	
Strength [MPa]	

Flange on rear	
Width [mm]	T2
Outer-Ø [mm]	F2
Inner-Ø [mm]	D2
Radius [mm]	R2
Material	
Strength [MPa]	

### Expansion bolt type 1 / threadless bores



### Expansion bolt type 2 / blind bores



### Expansion bolt type 3 / through bores

